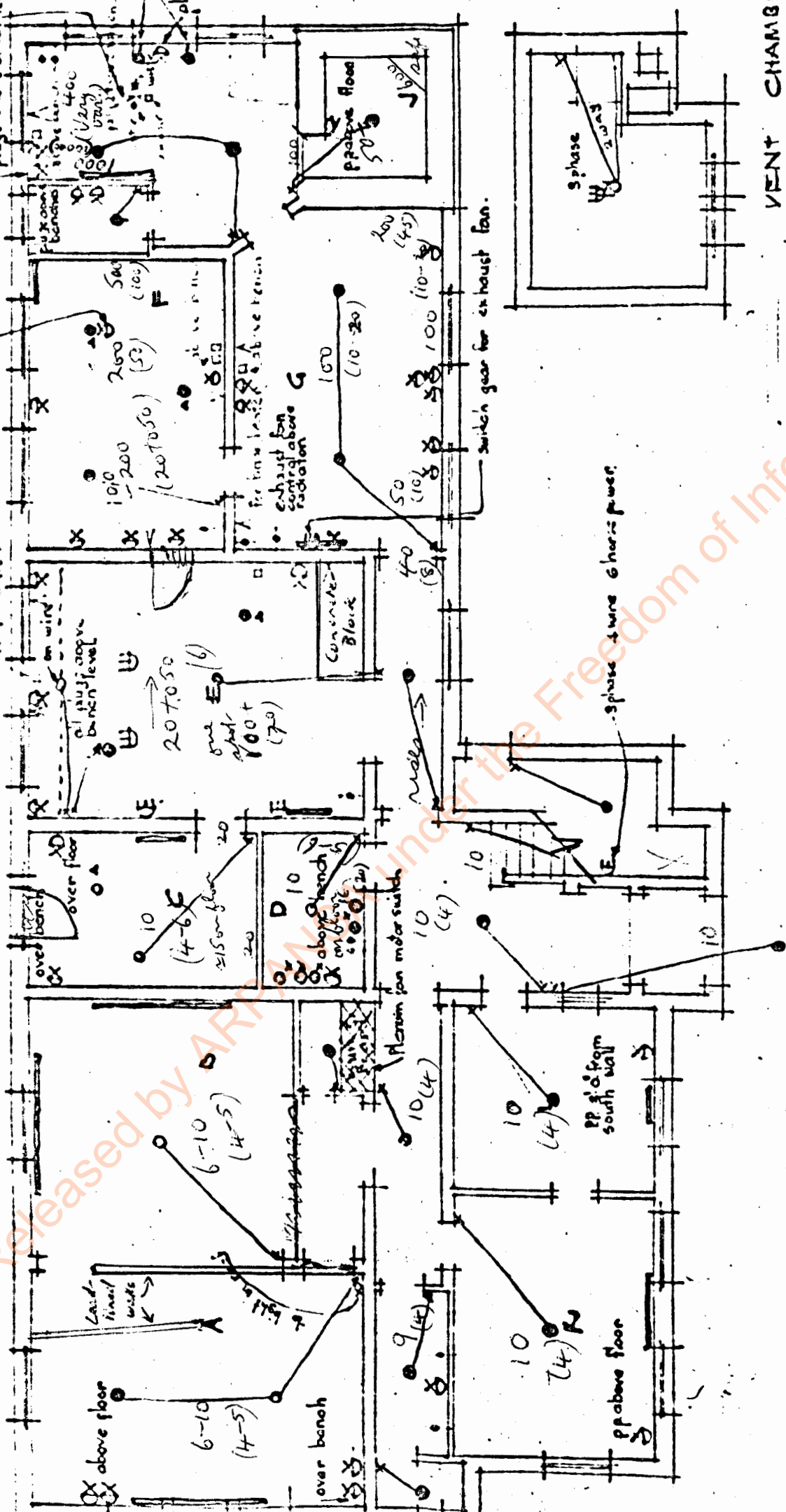


Preliminary Report
May 19/20

Released by ARPANSA under the Freedom of Information Act

MR/L
(4/18)

19/9/79



GROUND FLOOR PLAN

VENT CHAMBER

Released by AIR MAIL under the Freedom of Information Act

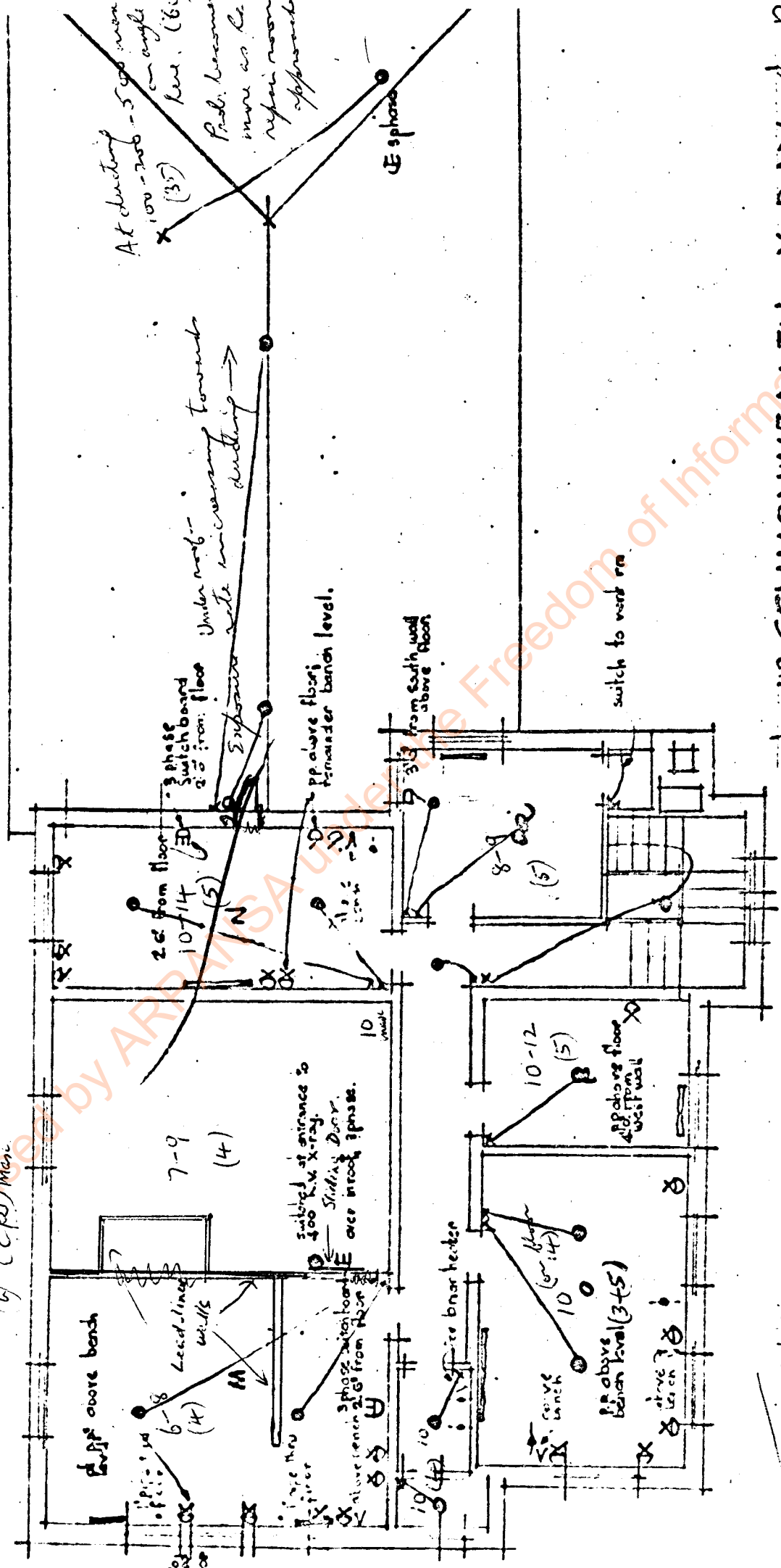
19/9/79

Prelim. Radial Survey

1.

15' x 4" with 4 gas taps off
water pipe and water outlet
in one compartment
over about 8' high.

(a) MRH
(b) (C.P.) man



JOB NO COMMONWEALTH X-RAY & R
381 LABORATORY - UNIVERS
OF MELBOURNE

DRAWN GAWLER & GRIMMOND FRU
GGJ

FIRST FLOOR PLAN

Outside building

Be approved =
6-7/79

Be approved
possible following
building 5/11/79

Nptans Entrance
 19/9/79 Univ Bldg
 NW room ~ 10µR/h *
 (O's lab room) 3-5 cpm/d +
 floor 10µR/h 138

Tools
 NE room ~ 10µR/h
 Old XR lab out room 6-8 µR/h
 Next door - old
 floor oil
 comp. unit
 adjacent over 4
 5

my old
 room
 (Ward) 10 µR/h
 - 12 5
 W room
 8-9 5
 495

S E room
 (set library -
 tea room) 10 - 14
 20 at open
 cleaning etc
 'air to air'
 area 5

Under part
 above
 area
 exp. rate, noise
 as walk in touch
 dust
 20 d. dust, rising to 200
 - 100+ - against wall
 in 200+ - common or
 angle (dust from
 Ra repair area) 500 µR/h - here 60µR/h
 generally 15

* Monitors: MR/R 'Studwick' (V) No
 L, d, d, d (N.E DP2/R + PCMS
 floor)

Released by ARPANSA under the Freedom of Information Act

Downstairs

	$\mu\text{R/h}$	CPS
Office/Work room NW corner	generally 10 $\mu\text{R/h}$	4 (65)
Hotel entrance	9	4
By post room Vestibule room	10	4
Meal room	6-10	4-5
Lab room Kitchen H.S. room	6-10 mostly 7	4-5
Anteroom	10	5-6
	on floor max 16	on floor to 20 cps
Passage \rightarrow Pub lab door	10 to 15 2 corners to 40 1 door to 8	4 5 8
gall. room	10 generally to 15-20 at doorway & along W. wall ~15 on floor	4-6 5
workshop	20+ to 50+ - 5 doors on floor near table 60+	6 20

Radio Area

Selected sample room	Hot spots (marked) 100+	70
Workshop lab room	100-200	20
	1 one hot spot	45
	tag from Bldg 107 5000cp?	50

Released by ARPANSA under the Freedom of Information Act

19/9/79

3

Rm area
(cont)

vpl

cps

transmit
low beam

Partition

Area: 200

50

gr wall
(rest hole 500
reflex area)

100

Rm
preparation
room

along wall 100
(windows)

10-20

near door 50
~~100~~

10

near SF 200
(note by open
floor + bottom)

45

generally 100

10-20

Ramp
room

Very variable 100 sp.
- 400 grains of
material will be
typical - 21000

Very var
- hot areas

SR

1000

SR

SR - cleaning 100
variable - 20 sp

off open safe [600
sp] [700 cps]

2000 sp
(on bench)

off safe, door
closed 500

250
(around
open)

Outside

background (6 to 7) ✓
vpl

NOTE background outside Yallahis building
in 5.10.1979

dust
samples
off
plan